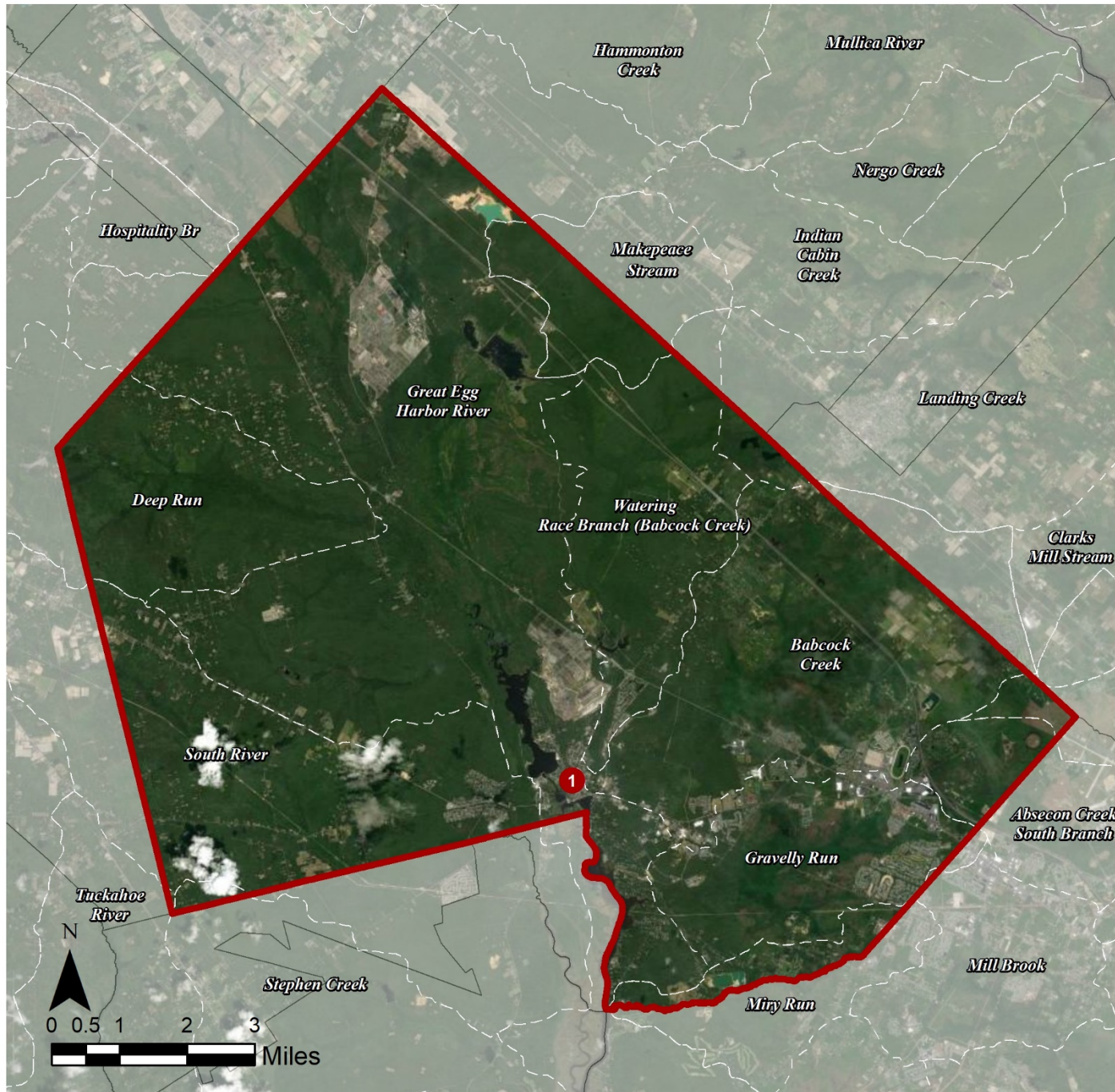


# HAMILTON TOWNSHIP (ATLANTIC): GREEN INFRASTRUCTURE SITE ADDENDUM



## GREAT EGG HARBOR RIVER SITES

1. Earthly Angels for Dementia

# EARTHLY ANGELS FOR DEMENTIA



**Subwatershed:** Great Egg Harbor River

**Site Area:** 24,325 sq. ft.

**Address:** 115 NJ-50, Mays Landing  
NJ 08330

**Block and Lot:** Block 757  
Lot 10, 11, 12

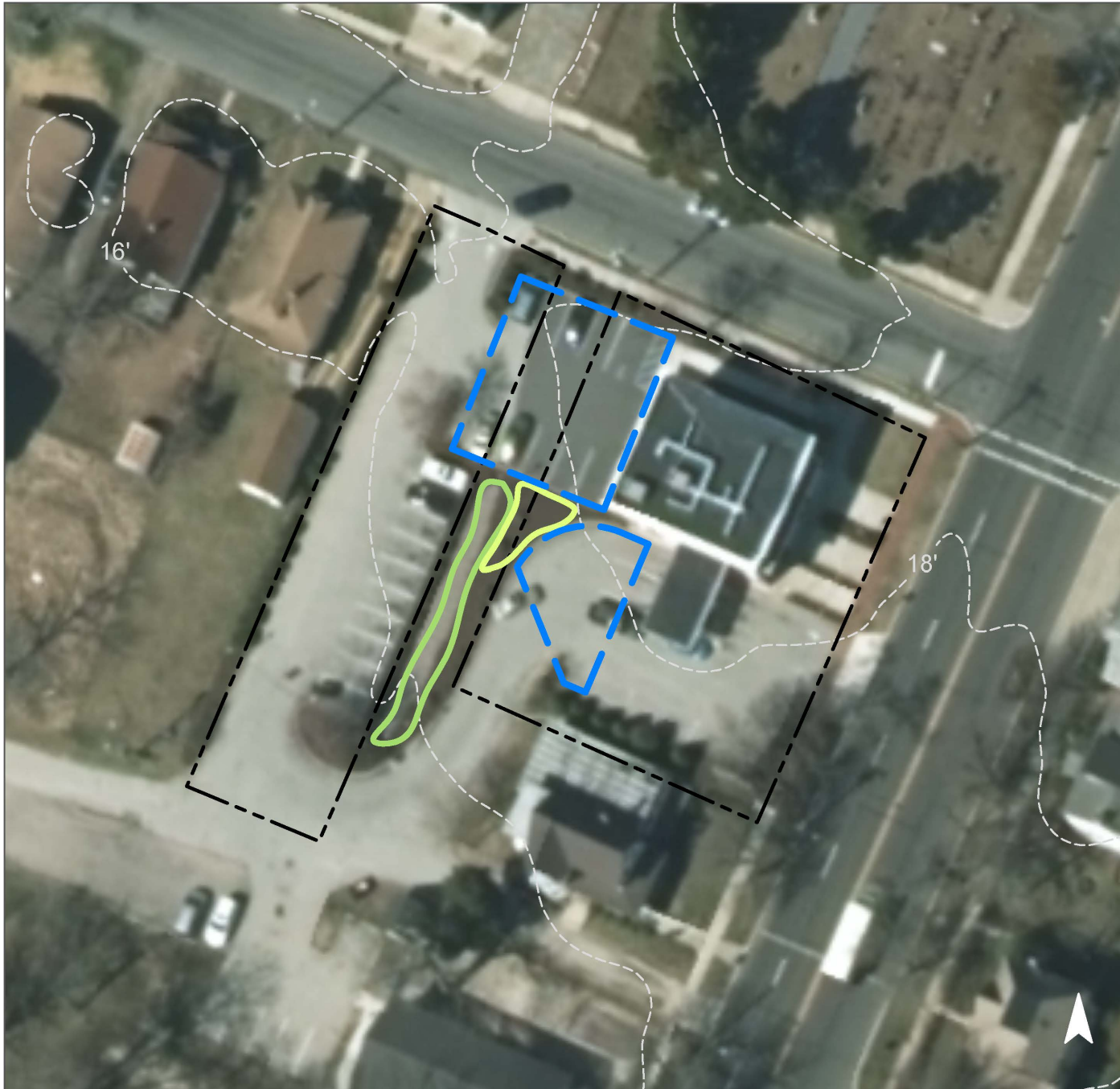


A rain garden can be installed in the existing landscaped area to capture the stormwater runoff from the nearby parking lot area. The stormwater can overflow into a bioswale which will replace the existing gravel swale to help promote stormwater infiltration. A preliminary soil assessment suggests that the soils have suitable drainage characteristics for green infrastructure. The property lines shown on the green infrastructure recommendation page are not updated to the current owner, so property line limits may differ from shown.






Impervious Cover		Existing Loads from Impervious Cover (lbs/yr)			Runoff Volume from Impervious Cover (Mgal)	
%	sq. ft.	TP	TN	TSS	For the 1.25" Water Quality Storm	For an Annual Rainfall of 44"
71	24,325	0.8	8.7	79.2	0.013	0.47

Recommended Green Infrastructure Practices	Recharge Potential (Mgal/yr)	TSS Removal Potential (lbs/yr)	Maximum Volume Reduction Potential (gal/storm)	Peak Discharge Reduction Potential (cu. ft./second)	Estimated Size (sq. ft.)	Estimated Cost
Bioretention system	0.035	6	2,540	0.10	325	\$1,625
Bioswale	0.041	10	2,970	0.03	795	\$3,975

# GREEN INFRASTRUCTURE RECOMMENDATIONS



## Earthly Angels for Dementia

-  bioretention system
-  bioswale
-  drainage area
-  property line
-  2015 Aerial: NJOIT, OGIS

