



**Impervious Cover Assessment  
for  
Elmer Borough, Salem County, New Jersey**

*Prepared for Elmer Borough by the  
Rutgers Cooperative Extension Water Resources Program*

August 10, 2016



## **Introduction**

Pervious and impervious are terms that are used to describe the ability or inability of water to flow through a surface. When rainfall hits a surface, it can soak into the surface or flow off the surface. Pervious surfaces are those which allow stormwater to readily soak into the soil and recharge groundwater. When rainfall drains from a surface, it is called "stormwater" runoff (Figure 1). An impervious surface can be any material that has been placed over soil that prevents water from soaking into the ground. Impervious surfaces include paved roadways, parking lots, sidewalks, and rooftops. As impervious areas increase, so does the volume of stormwater runoff.



Figure 1: Stormwater draining from a parking lot

New Jersey has many problems due to stormwater runoff, including:

- **Pollution**: According to the 2010 New Jersey Water Quality Assessment Report, 90% of the assessed waters in New Jersey are impaired, with urban-related stormwater runoff listed as the most probable source of impairment (USEPA, 2013). As stormwater flows over the ground, it picks up pollutants including animal waste, excess fertilizers, pesticides, and other toxic substances. These pollutants are then able to enter waterways.
- **Flooding**: Over the past decade, the state has seen an increase in flooding. Communities around the state have been affected by these floods. The amount of damage caused has also increased greatly with this trend, costing billions of dollars over this time span.

- Erosion: Increased stormwater runoff causes an increase in the velocity of flows in our waterways. The increased velocity after storm events erodes stream banks and shorelines, degrading water quality. This erosion can damage local roads and bridges and cause harm to wildlife.

The primary cause of the pollution, flooding, and erosion problems is the quantity of impervious surfaces draining directly to local waterways. New Jersey is one of the most developed states in the country. Currently, the state has the highest percent of impervious cover in the country at 12.1% of its total area (Nowak & Greenfield, 2012). Many of these impervious surfaces are directly connected to local waterways (i.e., every drop of rain that lands on these impervious surfaces ends up in a local river, lake, or bay without any chance of being treated or soaking into the ground). To repair our waterways, reduce flooding, and stop erosion, stormwater runoff from impervious surfaces has to be better managed. Surfaces need to be disconnected with green infrastructure to prevent stormwater runoff from flowing directly into New Jersey's waterways. Disconnection redirects runoff from paving and rooftops to pervious areas in the landscape.

Green infrastructure is an approach to stormwater management that is cost-effective, sustainable, and environmentally friendly. Green infrastructure projects capture, filter, absorb, and reuse stormwater to maintain or mimic natural systems and to treat runoff as a resource. As a general principal, green infrastructure practices use soil and vegetation to recycle stormwater runoff through infiltration and evapotranspiration. When used as components of a stormwater management system, green infrastructure practices such as bioretention, green roofs, porous pavement, rain gardens, and vegetated swales can produce a variety of environmental benefits. In addition to effectively retaining and infiltrating rainfall, these technologies can simultaneously help filter air pollutants, reduce energy demands, mitigate urban heat islands, and sequester carbon while also providing communities with aesthetic and natural resource benefits (USEPA, 2013).

The first step to reducing the impacts from impervious surfaces is to conduct an impervious cover assessment. This assessment can be completed on different scales: individual lot, municipality, or watershed. Impervious surfaces need to be identified for stormwater management. Once impervious surfaces have been identified, there are three steps to better manage these surfaces.

1. ***Eliminate surfaces that are not necessary.*** For example, a paved courtyard at a public school could be converted to a grassed area.
2. ***Reduce or convert impervious surfaces.*** There may be surfaces that are required to be hardened, such as roadways or parking lots, but could be made smaller and still be functional. A parking lot that has two-way car ways could be converted to one-way car ways. There also are permeable paving materials such as porous asphalt, pervious concrete, or permeable paving stones that could be substituted for impermeable paving materials (Figure 2).
3. ***Disconnect impervious surfaces from flowing directly to local waterways.*** There are many ways to capture, treat, and infiltrate stormwater runoff from impervious surfaces. Opportunities may exist to reuse this captured water.



Figure 2: Rapid infiltration of water through porous pavement is demonstrated at the USEPA Edison New Jersey test site

### **Elmer Borough Impervious Cover Analysis**

Located in Salem County in southern New Jersey, Elmer Borough covers approximately 0.91 square miles. Figures 3 and 4 illustrate that Elmer Borough is dominated by urban land uses. A total of 65.2% of the municipality's land use is classified as urban. Of the urban land in Elmer Borough, medium density residential is the dominant land use (Figure 5).

The literature suggests a link between impervious cover and stream ecosystem impairment starting at approximately 10% impervious surface cover (Schueler, 1994; Arnold and Gibbons, 1996; May et al., 1997). Impervious cover may be linked to the quality of lakes, reservoirs, estuaries, and aquifers (Caraco et al., 1998), and the amount of impervious cover in a watershed can be used to project the current and future quality of streams. Based on the scientific literature, Caraco et al. (1998) classified urbanizing streams into the following three categories: sensitive streams, impacted streams, and non-supporting streams. Sensitive streams typically have a watershed impervious surface cover from 0 – 10%. Impacted streams have a watershed impervious cover ranging from 11-25% and typically show clear signs of degradation from urbanization. Non-supporting streams have a watershed impervious cover of greater than 25%; at this high level of impervious cover, streams are simply conduits for stormwater flow and no longer support a diverse stream community.

The New Jersey Department of Environmental Protection's (NJDEP) 2012 land use/land cover geographical information system (GIS) data layer categorizes Elmer Borough into many unique land use areas, assigning a percent impervious cover for each delineated area. These impervious cover values were used to estimate the impervious coverage for Elmer Borough. Based upon the 2012 NJDEP land use/land cover data, approximately 20.1% of Elmer Borough has impervious cover. This level of impervious cover suggests that the streams in Elmer Borough are likely impacted streams.

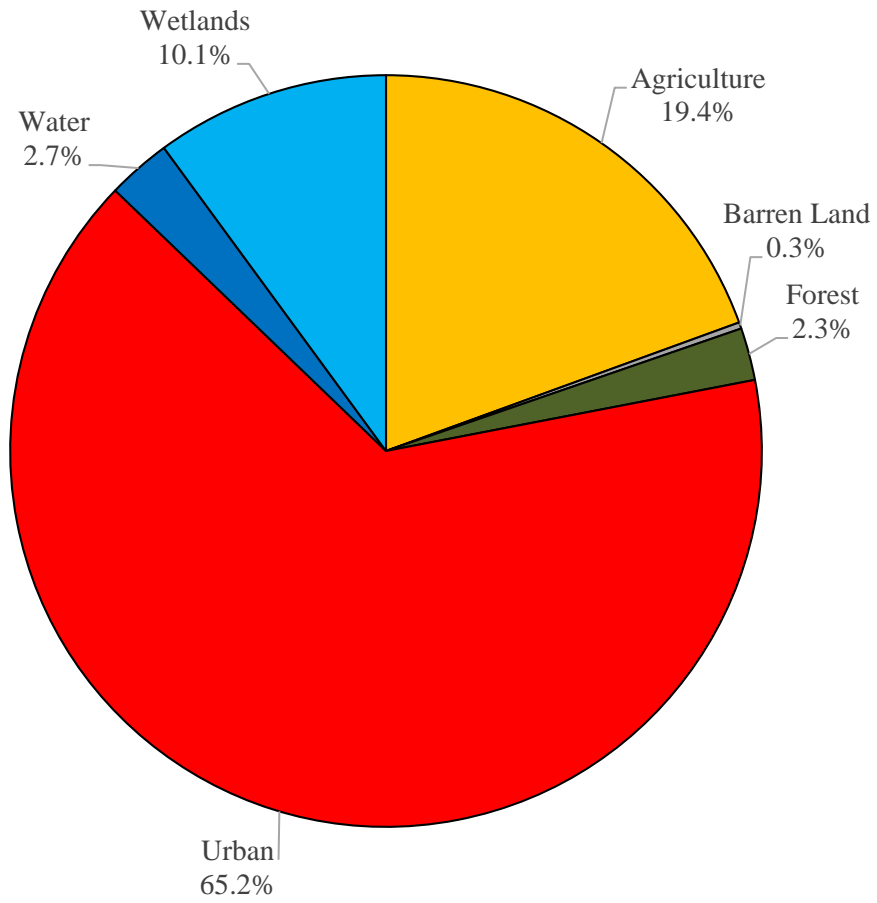


Figure 3: Pie chart illustrating the land use in Elmer Borough

# Land Use Types for Elmer Borough

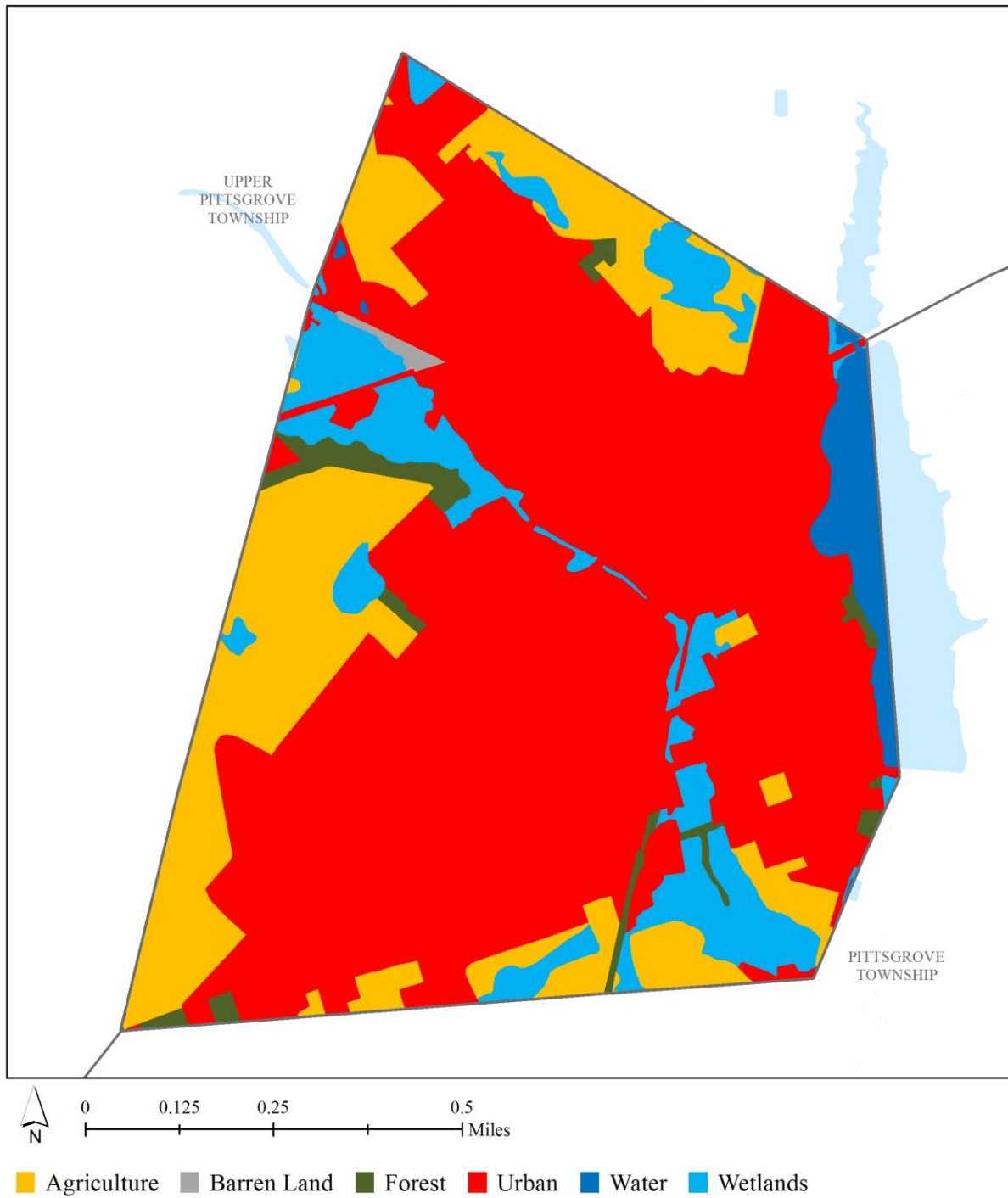


Figure 4: Map illustrating the land use in Elmer Borough



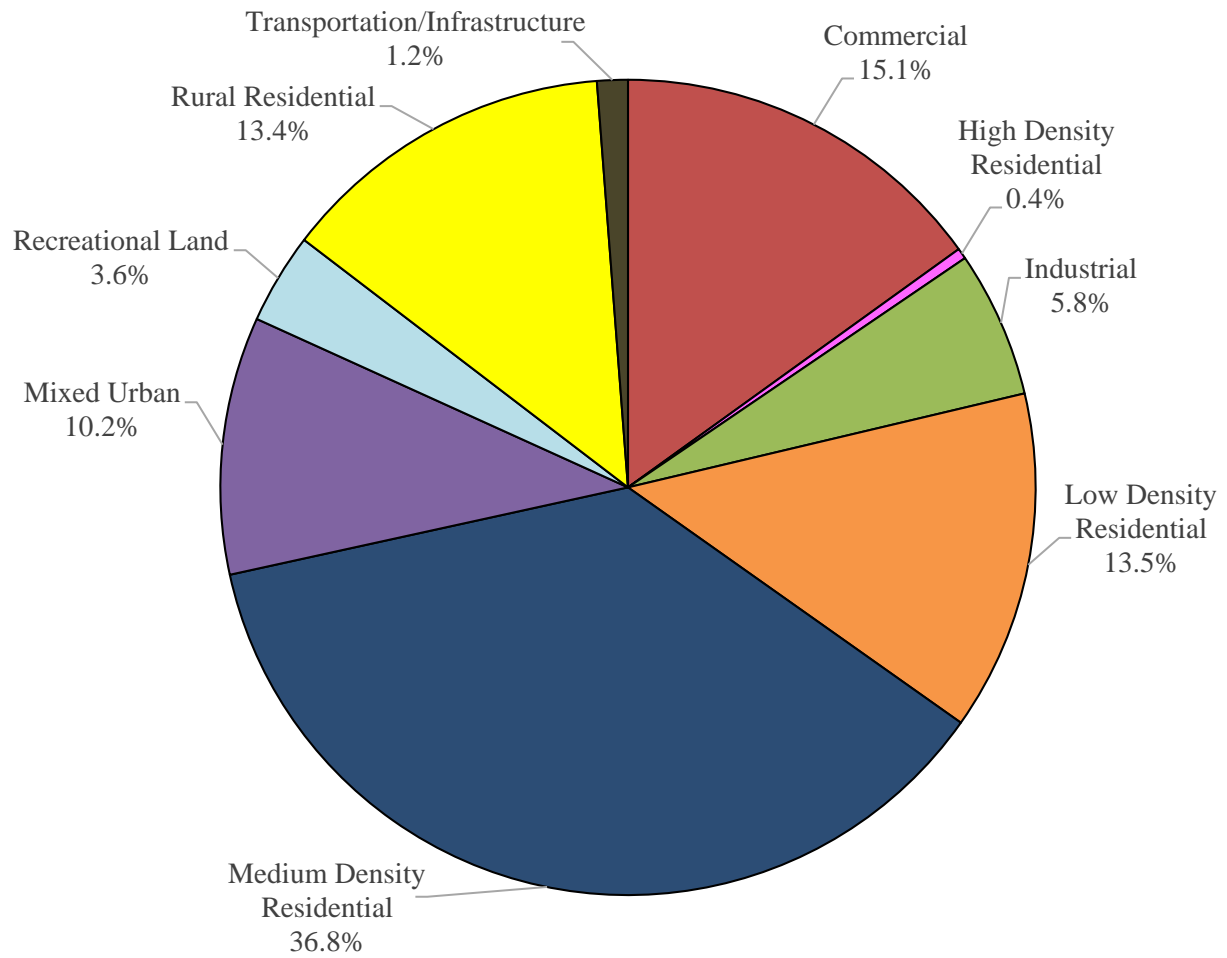


Figure 5: Pie chart illustrating the various types of urban land use in Elmer Borough

Water resources are typically managed on a watershed/subwatershed basis; therefore an impervious cover analysis was performed for each subwatershed within Elmer Borough (Table 1 and Figure 6). On a subwatershed basis, impervious cover ranges from 4.3% in the Palatine Branch subwatershed to 20.6% in the Muddy Run subwatershed. Evaluating impervious cover on a subwatershed basis allows the municipality to focus impervious cover reduction or disconnection efforts in the subwatersheds where frequent flooding occurs.

In developed landscapes, stormwater runoff from parking lots, driveways, sidewalks, and rooftops flows to drainage pipes that feed the sewer system. The cumulative effect of these impervious surfaces and thousands of connected downspouts reduces the amount of water that can infiltrate into soils and greatly increases the volume and rate of runoff that flows to waterways. Stormwater runoff volumes (specific to Elmer Borough, Salem County) associated with impervious surfaces were calculated for the following storms: the New Jersey water quality design storm of 1.25 inches of rain, an annual rainfall of 44 inches, the 2-year design storm (3.3 inches of rain), the 10-year design storm (5.0 inches of rain), and the 100-year design storm (8.5 inches of rain). These runoff volumes are summarized in Table 2. A substantial amount of rainwater drains from impervious surfaces in Elmer Borough. For example, if the stormwater runoff from one water quality storm (1.25 inches of rain) in the Muddy Run subwatershed was harvested and purified, it could supply water to 36 homes for one year<sup>1</sup>.

---

<sup>1</sup> Assuming 300 gallons per day per home

Table 1: Impervious cover analysis by subwatershed for Elmer Borough

Subwatershed	Total Area		Land Use Area		Water Area		Impervious Cover		
	(ac)	(mi <sup>2</sup> )	(ac)	(mi <sup>2</sup> )	(ac)	(mi <sup>2</sup> )	(ac)	(mi <sup>2</sup> )	(%)
Muddy Run	568.7	0.89	552.6	0.86	16.1	0.03	113.6	0.18	20.6%
Palatine Branch	16.0	0.02	16.0	0.02	0.0	0.00	0.7	0.00	4.3%
Total	584.7	0.91	568.6	0.89	16.1	0.03	114.3	0.18	20.1%

# Subwatersheds of Elmer Borough

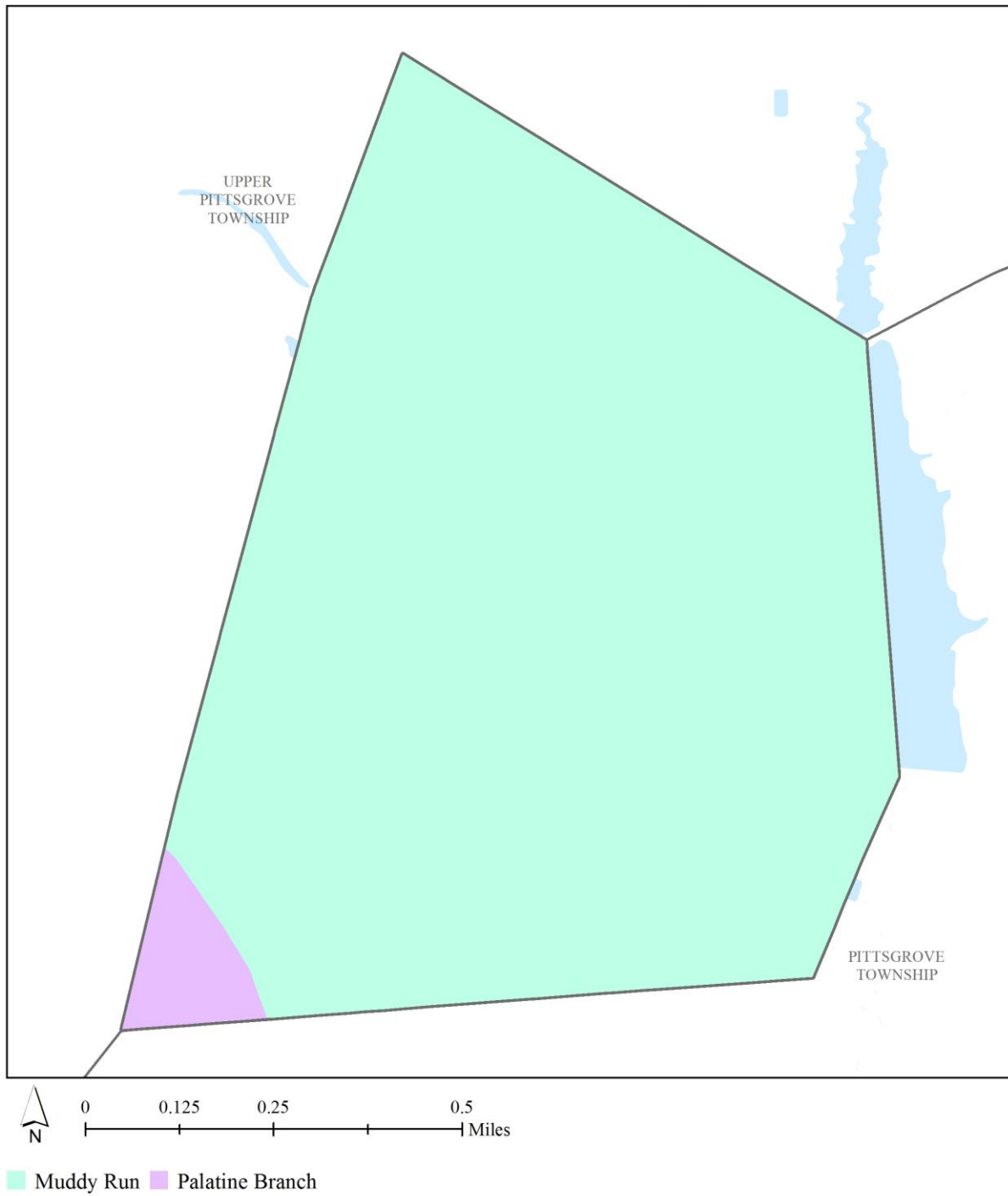


Figure 6: Map of the subwatersheds in Elmer Borough

Table 2: Stormwater runoff volumes from impervious surfaces by subwatershed in Elmer Borough

<b>Subwatershed</b>	<b>Total Runoff Volume for the 1.25" NJ Water Quality Storm (MGal)</b>	<b>Total Runoff Volume for the NJ Annual Rainfall of 44" (MGal)</b>	<b>Total Runoff Volume for the 2-Year Design Storm (3.3") (MGal)</b>	<b>Total Runoff Volume for the 10-Year Design Storm (5.0") (MGal)</b>	<b>Total Runoff Volume for the 100-Year Design Storm (8.5") (MGal)</b>
Muddy Run	3.9	135.7	10.8	16.0	25.6
Palatine Branch	0.0	0.8	0.1	0.1	0.2
Total	3.9	136.6	10.9	16.1	25.8

The next step is to set a reduction goal for impervious area in each subwatershed. Based upon the Rutgers Cooperative Extension (RCE) Water Resources Program's experience, a 10% reduction would be a reasonably achievable reduction for these subwatersheds in Elmer Borough. While it may be difficult to eliminate paved areas or replace paved areas with permeable pavement, it is relatively easy to identify impervious surfaces that can be disconnected using green infrastructure practices. For all practical purposes, disconnecting an impervious surface from a storm sewer system or a water body is an "impervious area reduction." The RCE Water Resources Program recommends that all green infrastructure practices that are installed to disconnect impervious surfaces should be designed for the 2-year design storm (3.3 inches of rain over 24-hours). Although this results in management practices that are slightly over-designed by NJDEP standards, which require systems to be designed for the New Jersey water quality storm (1.25 inches of rain over 2-hours), these systems will be able to handle the increase in storm intensities that are expected to occur due to climate change. By designing these management practices for the 2-year design storm, these practices will be able to manage 95% of the annual rainfall volume. The recommended annual reductions in runoff volumes are shown in Table 3.

As previously mentioned, once impervious surfaces have been identified, the next steps for managing impervious surfaces are to 1) eliminate surfaces that are not necessary, 2) reduce or convert impervious surfaces to pervious surfaces, and 3) disconnect impervious surfaces from flowing directly to local waterways.

### **Elimination of Impervious Surfaces**

One method to reduce impervious cover is to "depave." Depaving is the act of removing paved impervious surfaces and replacing them with pervious soil and vegetation that will allow for the infiltration of rainwater. Depaving leads to the re-creation of natural space that will help reduce flooding, increase wildlife habitat, and positively enhance water quality as well as beautify neighborhoods. Depaving also can bring communities together around a shared vision to work together to reconnect their neighborhood to the natural environment.

Table 3: Impervious cover reductions by subwatershed in Elmer Borough

<b>Subwatershed</b>	<b>Recommended Impervious Area Reduction (10%) (ac)</b>	<b>Annual Runoff Volume Reduction<sup>2</sup> (MGal)</b>
Muddy Run	11.4	12.9
Palatine Branch	0.1	0.1
Total	11.4	13.0

---

<sup>2</sup> Annual Runoff Volume Reduction =

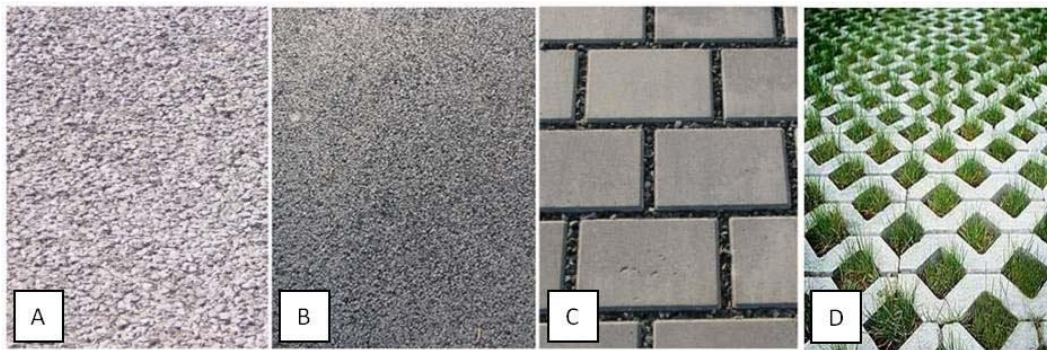
Acres of IC x 43,560 ft<sup>2</sup>/ac x 44 in x (1 ft/12 in) x 0.95 x (7.48 gal/ft<sup>3</sup>) x (1 MGal/1,000,000 gal)

All BMPs should be designed to capture the first 3.3 inches of rain from each storm. This would allow the BMP to capture 95% of the annual rainfall of 44 inches.

## **Pervious Pavement**

There are four different types of permeable pavement systems that are commonly being used throughout the country to reduce the environmental impacts from impervious surfaces. These surfaces include pervious concrete, porous asphalt, interlocking concrete pavers, and grid pavers.

*“Permeable pavement is a stormwater drainage system that allows rainwater and runoff to move through the pavement’s surface to a storage layer below, with the water eventually seeping into the underlying soil. Permeable pavement is beneficial to the environment because it can reduce stormwater volume, treat stormwater water quality, replenish the groundwater supply, and lower air temperatures on hot days (Rowe, 2012).”*



*Permeable surfaces: (A) pervious concrete, (B) porous asphalt, (C) interlocking concrete pavers, (D) grid pavers (Rowe, 2012)*

Pervious concrete and porous asphalt are the most common of the permeable surfaces. They are similar to regular concrete and asphalt but without the fine materials. This allows water to quickly pass through the material into an underlying layered system of stone that holds the water, allowing it to infiltrate into the underlying uncompacted soil.

## **Impervious Cover Disconnection Practices**

By redirecting runoff from paving and rooftops to pervious areas in the landscape, the amount of directly connected impervious area in a drainage area can be greatly reduced. There are many cost-effective ways to disconnect impervious surfaces from local waterways.

- **Simple Disconnection**: This is the easiest and least costly method to reduce stormwater runoff for smaller storm events. Instead of piping rooftop runoff to the street where it enters the catch basin and is piped to the river, the rooftop runoff is released onto a grassed



area to allow the water to be filtered by the grass and soak into the ground. A healthy lawn typically can absorb the first one to two inches of stormwater runoff from a rooftop. Simple disconnection also can be used to manage stormwater runoff from paved areas. Designing a parking lot or driveway to drain onto a grassed area, instead of the street, can dramatically reduce pollution and runoff volumes.

- Rain Gardens: Stormwater can be diverted into shallow landscaped depressed areas (i.e., rain gardens) where the vegetation filters the water, and it is allowed to soak into the ground. Rain gardens, also known as bioretention systems, come in all shapes and sizes and can be designed to disconnect a variety of impervious surfaces (Figure 7).



Figure 7: Rain garden outside the RCE of Gloucester County office which was designed to disconnect rooftop runoff from the local storm sewer system

- Rainwater Harvesting: Rainwater harvesting includes the use of rain barrels and cisterns (Figures 8a and 8b). These can be placed below downspouts to collect rooftop runoff. The collected water has a variety of uses including watering plants and washing cars. This practice also helps cut down on the use of potable water for nondrinking purposes. It is important to divert the overflow from the rainwater harvesting system to a pervious area.



Figure 8a: Rain barrel used to disconnect a downspout with the overflow going to a flower bed



Figure 8b: A 5,000 gallon cistern used to disconnect the rooftop of the Department of Public Works in Clark Township to harvest rainwater for nonprofit car wash events

### **Examples of Opportunities in Elmer Borough**

To address the impact of stormwater runoff from impervious surfaces, the next step is to identify opportunities in the municipality for eliminating, reducing, or disconnecting directly connected impervious surfaces. To accomplish this task, an impervious cover reduction action plan should be prepared. Aerial photographs are used to identify sites with impervious surfaces in the municipality that may be suitable for inclusion in the action plan. After sites are identified, site visits are conducted to photo-document all opportunities and evaluate the feasibility of eliminating, reducing, or disconnecting directly connected impervious surfaces. A brief description of each site discussing the existing conditions and recommendations for treatment of the impervious surfaces is developed. After a number of sites have been selected for inclusion in the action plan, concept plans and detailed green infrastructure information sheets are prepared for a selection of representative sites.

For Elmer Borough, three sites have been included in this assessment. Examples of concept plans and detailed green infrastructure information sheets are provided in Appendix A. The detailed green infrastructure information sheets describe existing conditions and issues, proposed solutions, anticipated benefits, possible funding sources, potential partners and stakeholders, and estimated costs. Additionally, each project has been classified as a mitigation opportunity for recharge potential, total suspended solids removal, and stormwater peak reduction. Finally, these detailed green infrastructure information sheets provide an estimate of gallons of stormwater captured and treated per year by each proposed green infrastructure practice. The concept plans provide an aerial photograph of the site and details of the proposed green infrastructure practices.

### **Conclusions**

Elmer Borough can reduce flooding and improve its waterways by better managing stormwater runoff from impervious surfaces. This impervious cover assessment is the first step toward better managing stormwater runoff. The next step is to develop an action plan to eliminate, reduce, or disconnect impervious surfaces where possible and practical. Many of the highly effective disconnection practices are inexpensive. The entire community can be engaged in implementing these disconnection practices.

## **References**

Arnold, C.L. Jr. and C.J. Gibbons. 1996. Impervious Surface Coverage The Emergence of a Key Environmental Indicator. *Journal of the American Planning Association* 62(2): 243-258.

Caraco, D., R. Claytor, P. Hinkle, H. Kwon, T. Schueler, C. Swann, S. Vysotsky, and J. Zielinski. 1998. Rapid Watershed Planning Handbook. A Comprehensive Guide for Managing Urbanizing Watersheds. Prepared by Center For Watershed Protection, Ellicott City, MD. Prepared for U.S. Environmental Protection Agency, Office of Wetlands, Oceans and Watersheds and Region V. October 1998.

May, C.W., R.R. Horner, J.R. Karr, B.W. Mar, E.G. Welch. 1997. Effects of Urbanization on Small Streams in the Puget Sound Lowland Ecoregion. *Watershed Protection Techniques* 2(4): 483-493.

Nowak, D. J., and E. J. Greenfield, 2012. Trees and Impervious Cover in the United States. *Landscape and Urban Planning* 107 (2012): 21-30.

[http://www.nrs.fs.fed.us/pubs/jrnl/2012/nrs\\_2012\\_nowak\\_002.pdf](http://www.nrs.fs.fed.us/pubs/jrnl/2012/nrs_2012_nowak_002.pdf)

Rowe, A., 2012. Green Infrastructure Practices: An Introduction to Permeable Pavement. Rutgers NJAES Cooperative Extension, FS1177, pp. 4.

<http://njaes.rutgers.edu/pubs/publication.asp?pid=FS1177>

Schueler, T. 1994. The Importance of Imperviousness. *Watershed Protection Techniques*1(3): 100-111.

United States Environmental Protection Agency (USEPA), 2013. Watershed Assessment, Tracking, and Environmental Results, New Jersey Water Quality Assessment Report.

[http://ofmpub.epa.gov/waters10/attains\\_state.control?p\\_state=NJ](http://ofmpub.epa.gov/waters10/attains_state.control?p_state=NJ)

## **Appendix A**

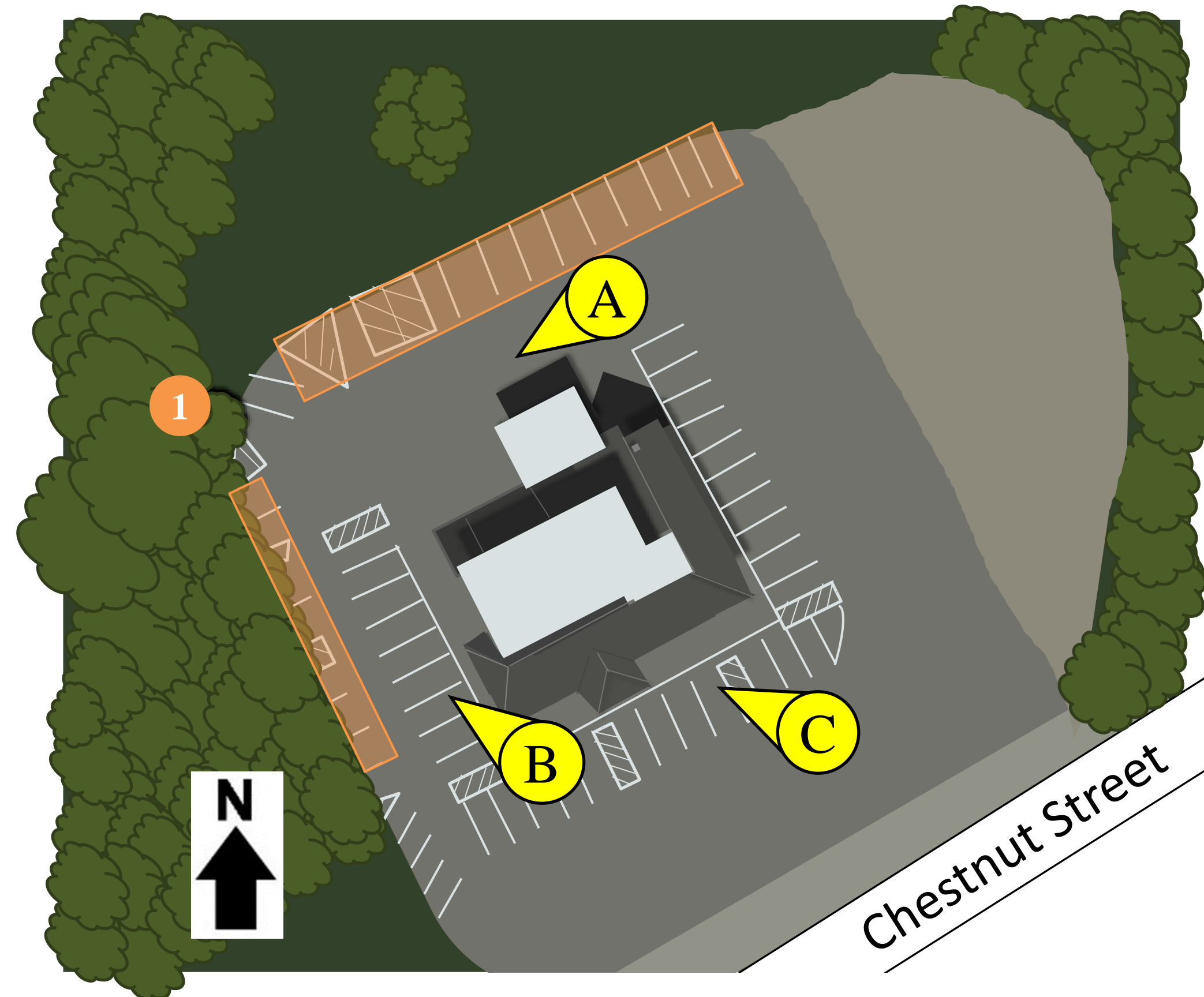
### **Examples of Impervious Cover Reduction Action Plan Projects Concept Plans and Detailed Green Infrastructure Information Sheets**

# Elmer Borough Impervious Cover Assessment *Elmer Diner, 41 Chestnut Street*

## PROJECT LOCATION:



## SITE PLAN:



**1** **POROUS PAVEMENT:** Porous pavement promotes groundwater recharge and filters stormwater. This site has strips of parking spaces that can be repaved with porous pavement to capture runoff from the parking lot and rooftop.

## 1 POROUS PAVEMENT



**A**



**B**



**C**



Elmer Diner  
Green Infrastructure Information Sheet

<p><b>Location:</b> 41 Chestnut Street Elmer, NJ 08318</p>	<p><b>Municipality:</b> Elmer Borough</p>
<p><b>Green Infrastructure Description:</b> porous pavement</p>	<p><b>Subwatershed:</b> Muddy Run</p> <p><b>Targeted Pollutants:</b> total nitrogen (TN), total phosphorus (TP), and total suspended solids (TSS) in surface runoff</p>
<p><b>Mitigation Opportunities:</b> recharge potential: yes stormwater peak reduction potential: yes total suspended solids removal potential: yes</p>	<p><b>Stormwater Captured and Treated Per Year:</b> porous pavement N: 384,580 gal. porous pavement W: 181,080 gal.</p>
<p><b>Existing Conditions and Issues:</b> Elmer Diner is surrounded by impervious cover which prevents the infiltration of stormwater. The diner is located adjacent to a drainage pipe outlet that flows into a drainage ditch. During heavy storms, the high volume of runoff from the diner could cause the water in the drainage pipe to back up.</p>	
<p><b>Proposed Solution(s):</b> Porous pavement can be used to replace the north and west strips of parking spaces to capture runoff from the parking lot and from the disconnected downspouts. This will allow infiltration of the stormwater runoff, reducing the potential of drainage backup.</p>	
<p><b>Anticipated Benefits:</b> Porous pavement allows stormwater to infiltrate through to soil layers which will promote groundwater recharge as well as intercept and filter stormwater runoff. Porous pavement is estimated to achieve a 95% pollutant load reduction for TN, TP, and TSS.</p>	
<p><b>Possible Funding Sources:</b> mitigation funds from local developers William Penn Foundation Elmer Borough local social and community groups</p>	
<p><b>Partners/Stakeholders:</b> Elmer Borough local community groups residents Rutgers Cooperative Extension</p>	

Elmer Diner  
Green Infrastructure Information Sheet

---

**Estimated Cost:**

The north section of porous asphalt would cover 2,520 square feet and have a two-foot stone reservoir under the surface. At \$25 per square foot, the cost of the porous asphalt system would be \$63,000. The west section of porous asphalt would cover 1,820 square feet and have a two-foot stone reservoir under the surface. At \$25 per square foot, the cost of the porous asphalt system would be \$45,500.

The total cost of the project will be approximately \$108,500.



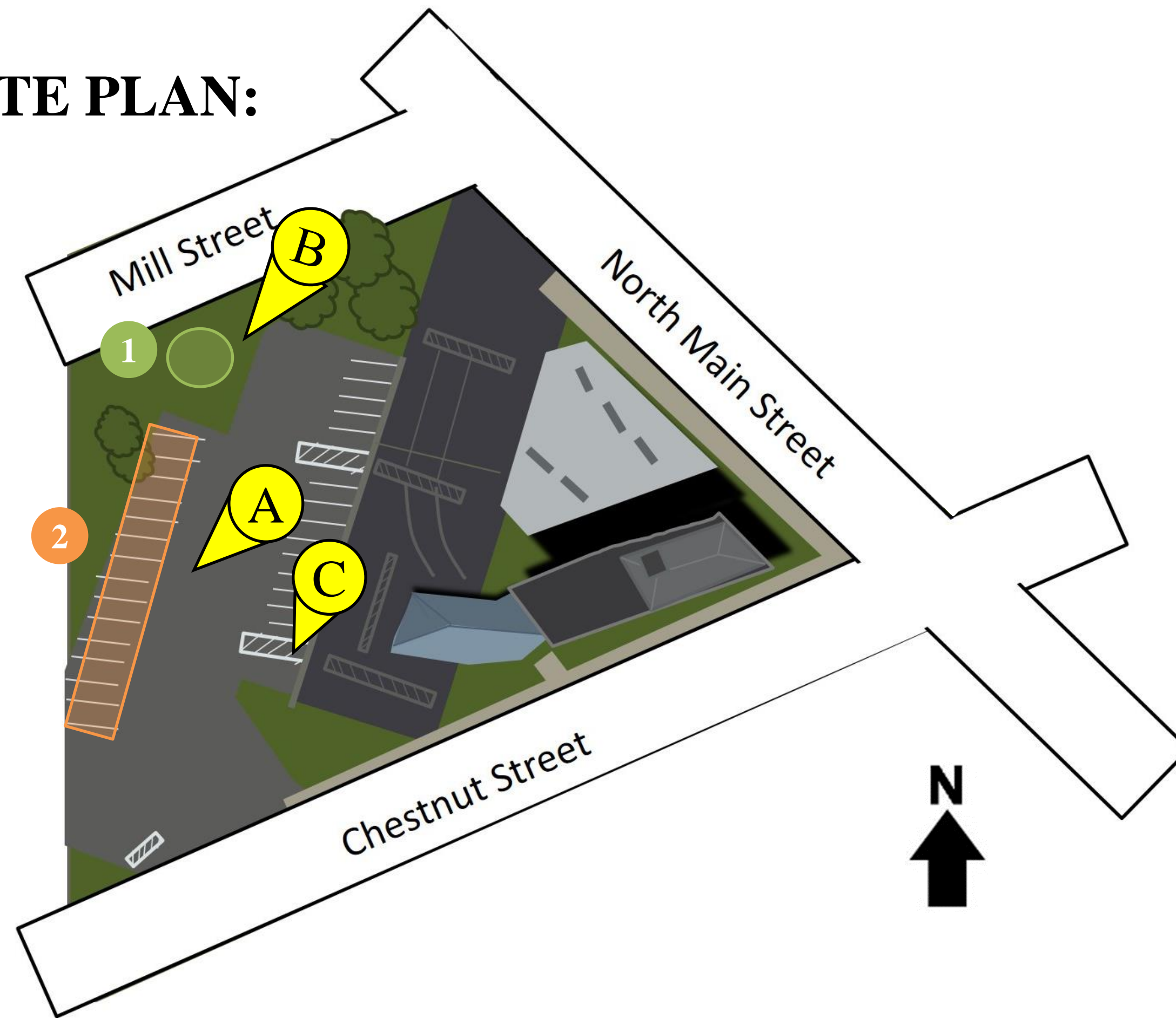
# Elmer Borough Impervious Cover Assessment

*First National Bank of Elmer, 10 South Main Street*

## PROJECT LOCATION:



## SITE PLAN:



**A**



**B**



**C**



- 1 BIORETENTION SYSTEMS:** Rain gardens can be used to reduce sediment and nutrient loading to the local waterway and increase groundwater recharge. Runoff from the parking lot can be captured by installing a rain garden in the northwest area of the lot.
- 2 POROUS PAVEMENT:** Porous pavement promotes groundwater recharge and filters stormwater. The western strip of parking spaces can be redone with porous pavement to capture additional runoff from the parking lot.

## 1 BIORETENTION SYSTEM



## 2 POROUS PAVEMENT



PERMEABLE PAVEMENT DIAGRAM

First National Bank of Elmer  
Green Infrastructure Information Sheet

<p><b>Location:</b> 10 South Main Street Elmer, NJ 08318</p>	<p><b>Municipality:</b> Elmer Borough</p> <p><b>Subwatershed:</b> Muddy Run</p>
<p><b>Green Infrastructure Description:</b> bioretention system (rain garden) porous pavement</p>	<p><b>Targeted Pollutants:</b> total nitrogen (TN), total phosphorus (TP), and total suspended solids (TSS) in surface runoff</p>
<p><b>Mitigation Opportunities:</b> recharge potential: yes stormwater peak reduction potential: yes total suspended solids removal potential: yes</p>	<p><b>Stormwater Captured and Treated Per Year:</b> bioretention system: 80,640 gal. porous pavement: 351,360 gal.</p>
<p><b>Existing Conditions and Issues:</b> This site has areas of impervious cover that contribute to stormwater runoff. The parking lots are sloped generally toward the west with some areas sloping toward the roadways.</p>	
<p><b>Proposed Solution(s):</b> A rain garden could be installed in the grass area northwest of the parking lot to capture runoff from the adjacent parking lot area. The western strip of parking spaces can be redone with porous pavement to capture runoff from a majority of the remaining parking lot.</p>	
<p><b>Anticipated Benefits:</b> Since the bioretention system would be designed to capture, treat, and infiltrate the entire 2-year design storm (3.3 inches of rain over 24 hours), this system is estimated to achieve a 95% pollutant load reduction for TN, TP, and TSS. A bioretention system would also provide ancillary benefits, such as enhanced wildlife and aesthetic appeal to the local residents of Elmer Borough.</p> <p>Porous pavement allows stormwater to penetrate through to soil layers which will promote groundwater recharge as well as intercept and filter stormwater runoff. The porous pavement system will achieve the same level of pollutant load reduction for TN, TP and TSS as the bioretention system.</p>	
<p><b>Possible Funding Sources:</b> mitigation funds from local developers William Penn Foundation Elmer Borough local social and community groups</p>	
<p><b>Partners/Stakeholders:</b> Elmer Borough local community groups residents Rutgers Cooperative Extension</p>	

First National Bank of Elmer  
Green Infrastructure Information Sheet

---

**Estimated Cost:**

A rain garden to capture the parking lot runoff would need to be approximately 775 square feet. At \$5 per square foot, the estimated cost of the rain garden is \$3,875.

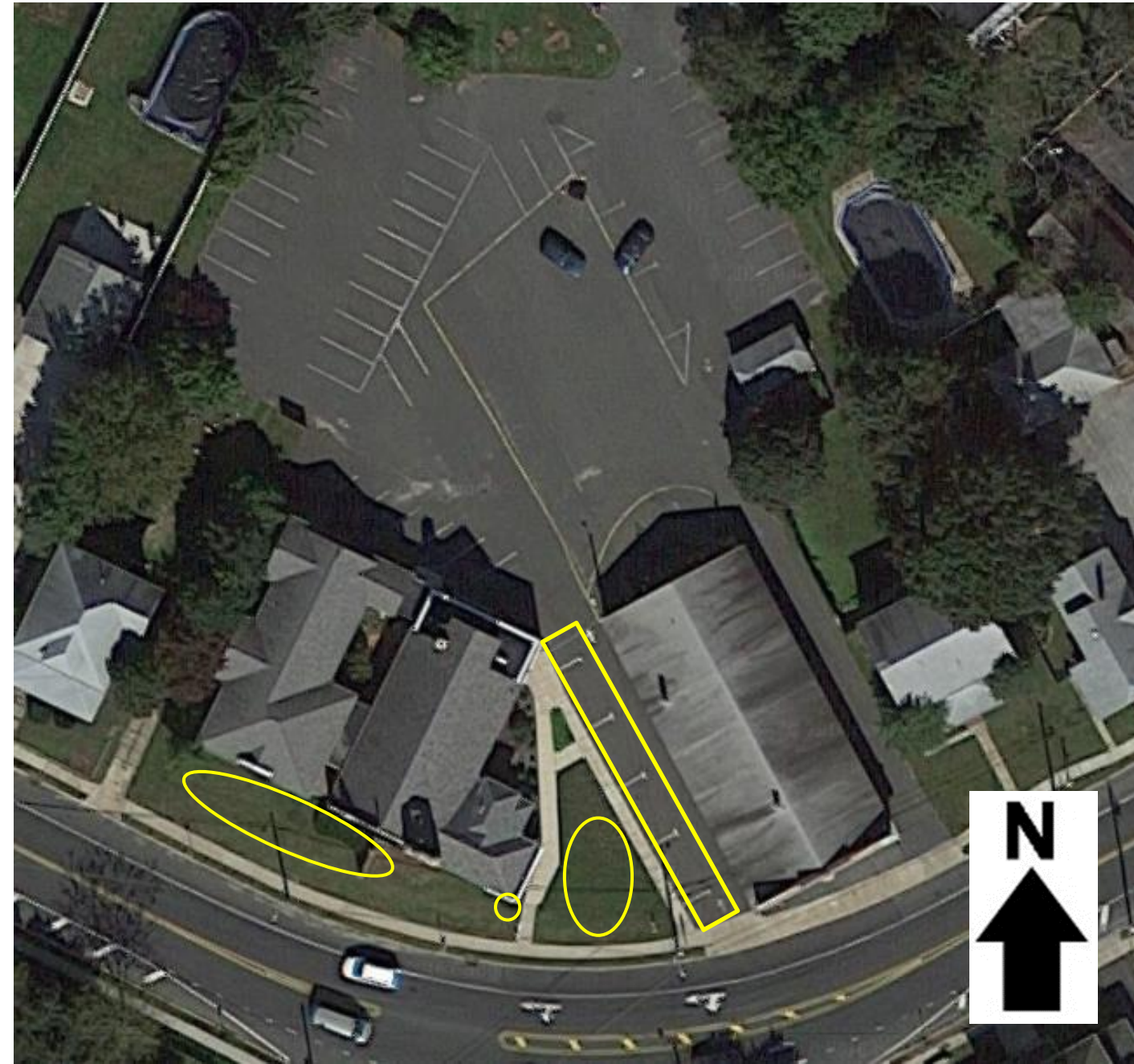
The porous asphalt would cover 3,585 square feet and have a two foot stone reservoir under the surface. At \$25 per square foot, the cost of the porous asphalt system would be \$89,625.

The total cost of the project will be approximately \$93,500.

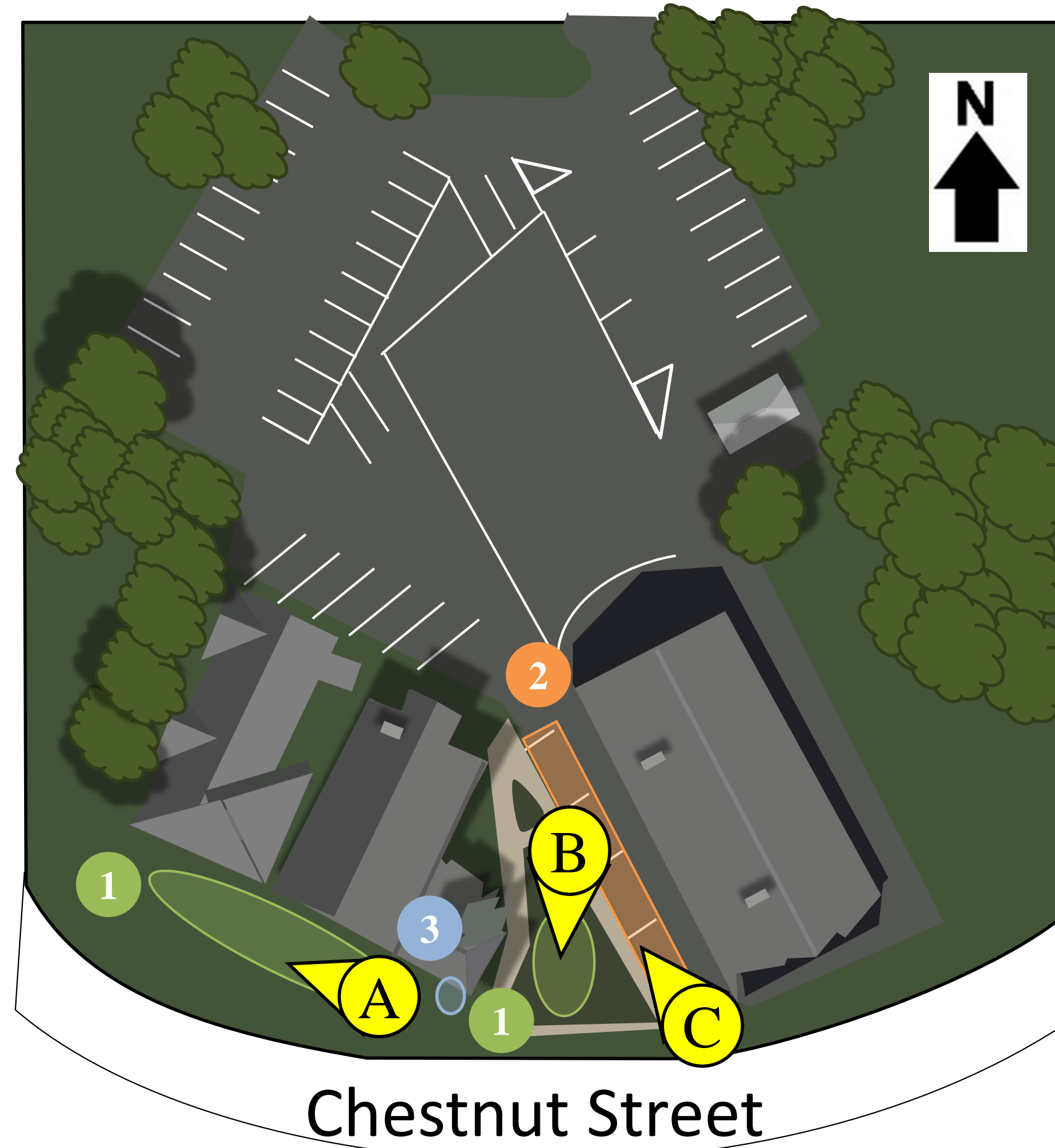
# Elmer Borough Impervious Cover Assessment

*Elmer Presbyterian Church, 107 Chestnut Street*

## PROJECT LOCATION:



## SITE PLAN:



- 1 BIORETENTION SYSTEMS:** Rain gardens can be installed to reduce sediment and nutrient loading to the local waterway and increase groundwater recharge. Downspouts from the roof can be disconnected and redirected into two rain gardens near the front of the church.
- 2 POROUS PAVEMENT:** Porous pavement promotes groundwater recharge and filters stormwater. The parking spaces parallel to the church can be replaced with porous pavement to capture runoff the flows down the driveway.
- 3 RAIN BARREL:** A rain barrel can harvest stormwater that drains from the building's rooftop. The water can then be used to water the existing landscaping

**A**



**B**



**C**



## 1 BIORETENTION SYSTEM



## 2 POROUS PAVEMENT



## 3 RAIN BARREL



Elmer Presbyterian Church  
Green Infrastructure Information Sheet

<p><b>Location:</b> 107 Chestnut Street Elmer, NJ 08318</p>	<p><b>Municipality:</b> Elmer Borough</p> <p><b>Subwatershed:</b> Muddy Run</p>
<p><b>Green Infrastructure Description:</b> bioretention system (rain garden) porous pavement rain barrel (rainwater harvesting)</p>	<p><b>Targeted Pollutants:</b> total nitrogen (TN), total phosphorus (TP), and total suspended solids (TSS) in surface runoff</p>
<p><b>Mitigation Opportunities:</b> recharge potential: yes stormwater peak reduction potential: yes total suspended solids removal potential: yes</p>	<p><b>Stormwater Captured and Treated Per Year:</b> bioretention system W: 52,110 gal. bioretention system E: 24,230 gal. porous pavement: 104,220 gal. rain barrel: 871 gal.</p>
<p><b>Existing Conditions and Issues:</b> This site has significant areas of impervious cover including a rooftop and parking area that contribute volumes of stormwater runoff. Some of the building's downspouts are connected, and the disconnected downspouts release water onto the front lawn before flowing into a catch basin. The driveway slopes toward the roadway.</p>	
<p><b>Proposed Solution(s):</b> The downspouts near the front of the church can be disconnected and rerouted into a rain garden in the grass area to capture runoff. A second rain garden can be installed closer to the driveway, rerouting nearby downspouts into it. The driveway has parallel parking spaces that could be redone with porous pavement to capture runoff flowing from the parking lot before reaching the roadway nearest the catch basin. A rain barrel could be used to capture roof runoff for use in watering the existing landscaping.</p>	
<p><b>Anticipated Benefits:</b> Since the bioretention systems would be designed to capture, treat, and infiltrate the entire 2-year design storm (3.3 inches of rain over 24 hours), these systems are estimated to achieve a 95% pollutant load reduction for TN, TP, and TSS. A bioretention system would also provide ancillary benefits, such as enhanced wildlife and aesthetic appeal to the local residents and congregation.</p> <p>Porous pavement allows stormwater to infiltrate through to soil layers which will promote groundwater recharge as well as intercept and filter stormwater runoff. The porous pavement system will achieve the same level of pollutant load reduction for TN, TP and TSS as the bioretention system.</p> <p>Rain barrels can harvest stormwater which can be used for watering plants, or other purposes which cuts back on use of potable water for nondrinking purposes.</p> <p>Since the rainwater harvesting system would be designed to capture the first 1.25 inches of rain, it would reduce the pollutant loading by 90% during the periods it is operational (i.e., it would not be used in the winter when there is chance of freezing).</p>	

Elmer Presbyterian Church  
Green Infrastructure Information Sheet

---

**Possible Funding Sources:**

mitigation funds from local developers  
William Penn Foundation  
Elmer Borough  
local social and community groups

**Partners/Stakeholders:**

Elmer Borough  
local community groups  
residents or parishioners  
Rutgers Cooperative Extension

**Estimated Cost:**

The western rain garden would need to be approximately 500 square feet, and the eastern rain garden would need to be approximately 235 square feet. At \$5 per square foot, the estimated cost of the rain gardens are \$2,500 and \$1,175 respectively.

The porous asphalt would cover 712 square feet and have a two foot stone reservoir under the surface. At \$25 per square foot, the cost of the porous asphalt system would be \$17,800.

The rain barrel would be 55 gallons and would cost \$250 to purchase and install.

The total cost of the project will thus be approximately \$21,725.