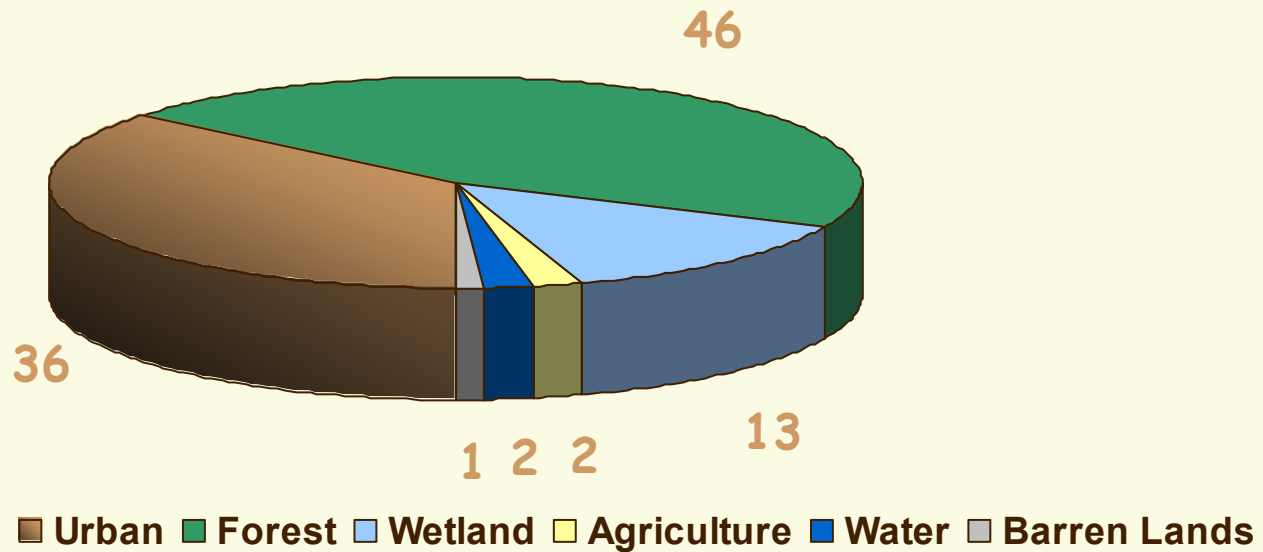


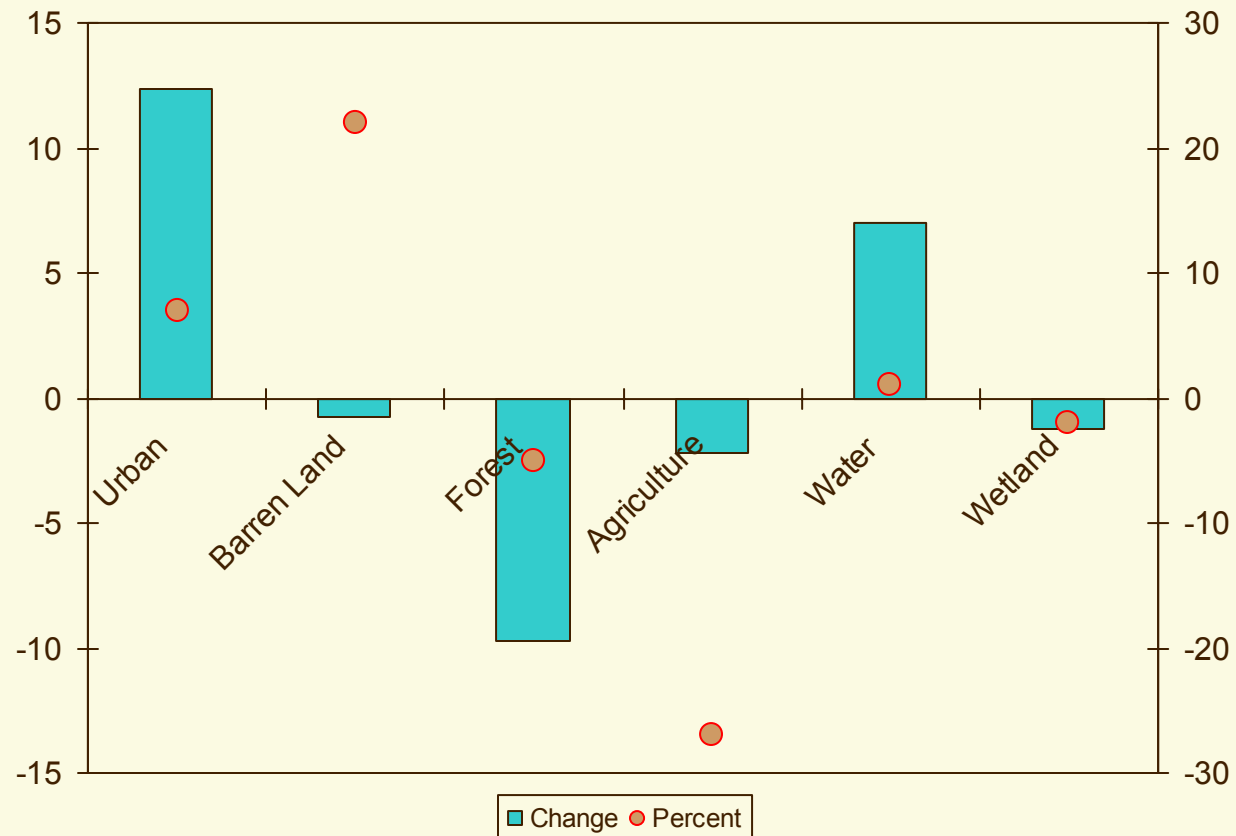
# WMA 6 Watershed Characterization

## Land Use



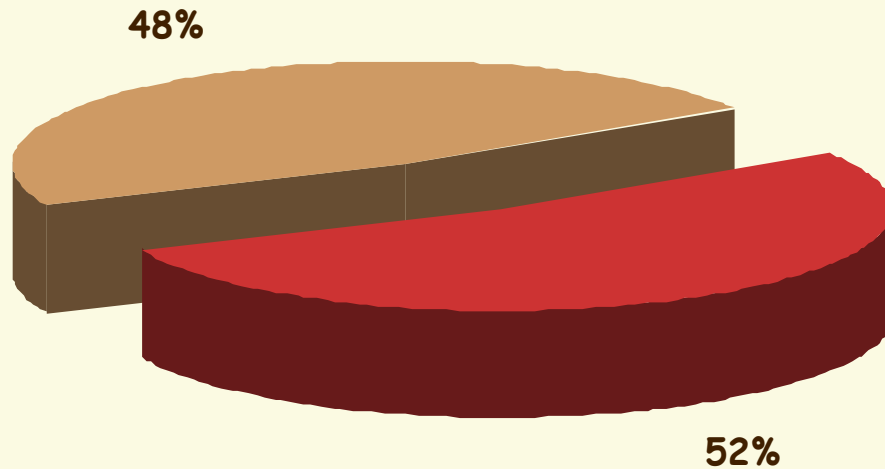
# WMA 6 Watershed Characterization

 Land Use Change from 1986 to 1995



# WMA 6 Watershed Characterization

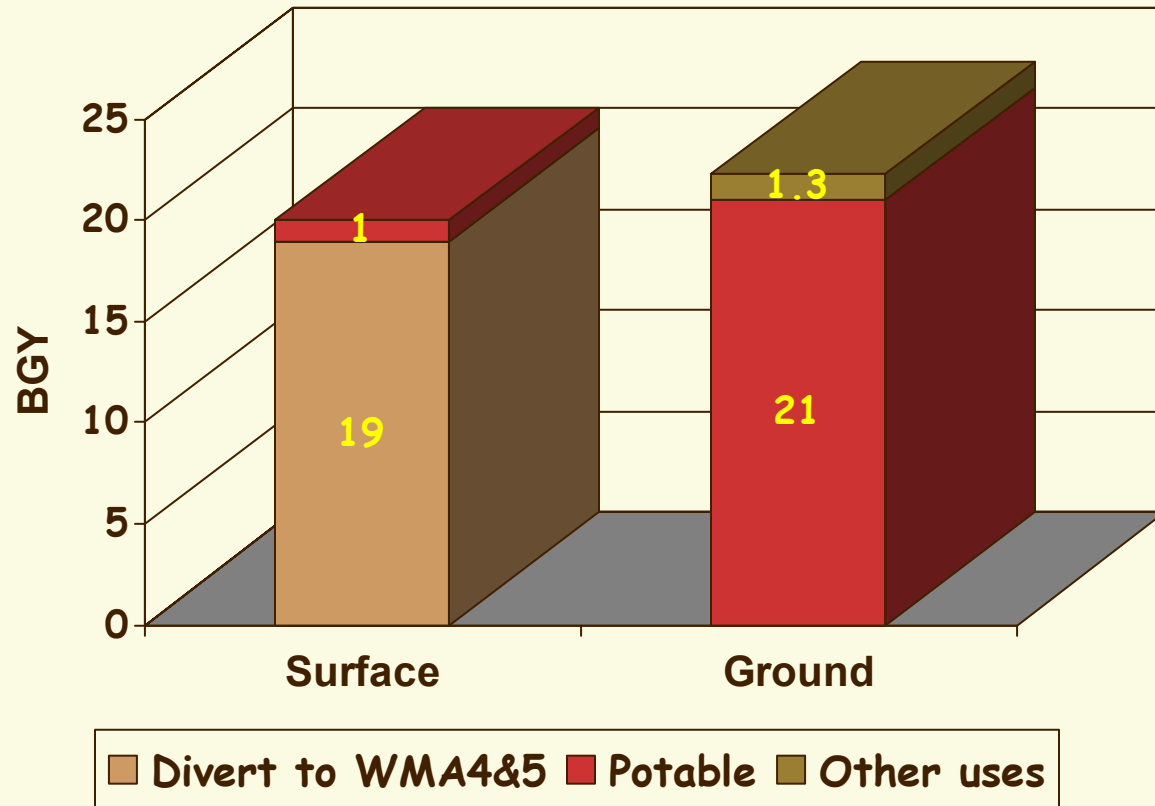
## Source of Water Diversion in WMA6



■ Surface ■ Ground

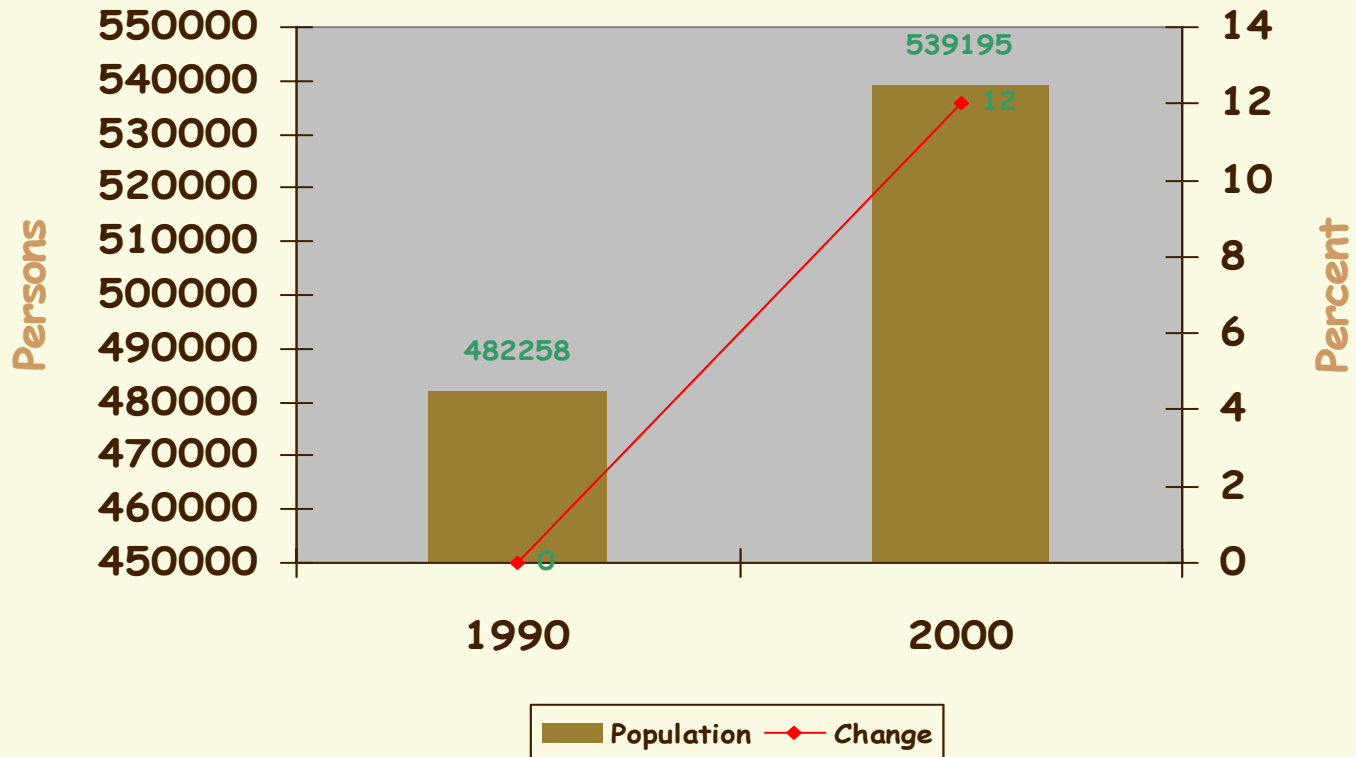
# WMA 6 Watershed Characterization

Sources and Destinations of Average Water Diversions from 1990 to 2000



# WMA 6 Watershed Characterization

## Population Trend over 10 Years



# WMA 6 Watershed Characterization

---

## Watershed Stressors:

- Non-point sources: stormwater runoff, golf courses & residential lawn areas
- Point sources: 26 domestic permitted wastewater treatment facilities, total discharge 67 MGD. Two largest wastewater plants are: Parsippany-Troy Hills Facility (16MGD) and Rockaway Valley Regional Sewerage Authority Facility (12MGD).

# WMA 6 Watershed Characterization

Percentage of Total Loading to Waterways

