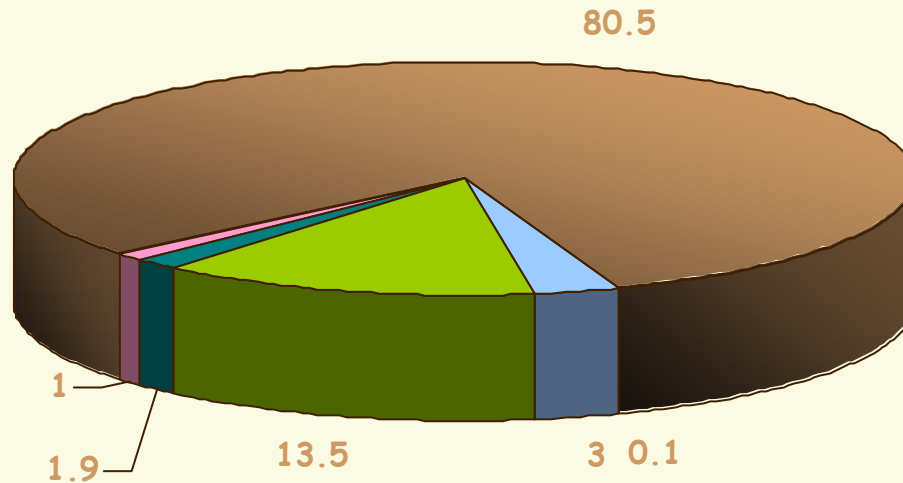


WMA 4 Watershed Characterization

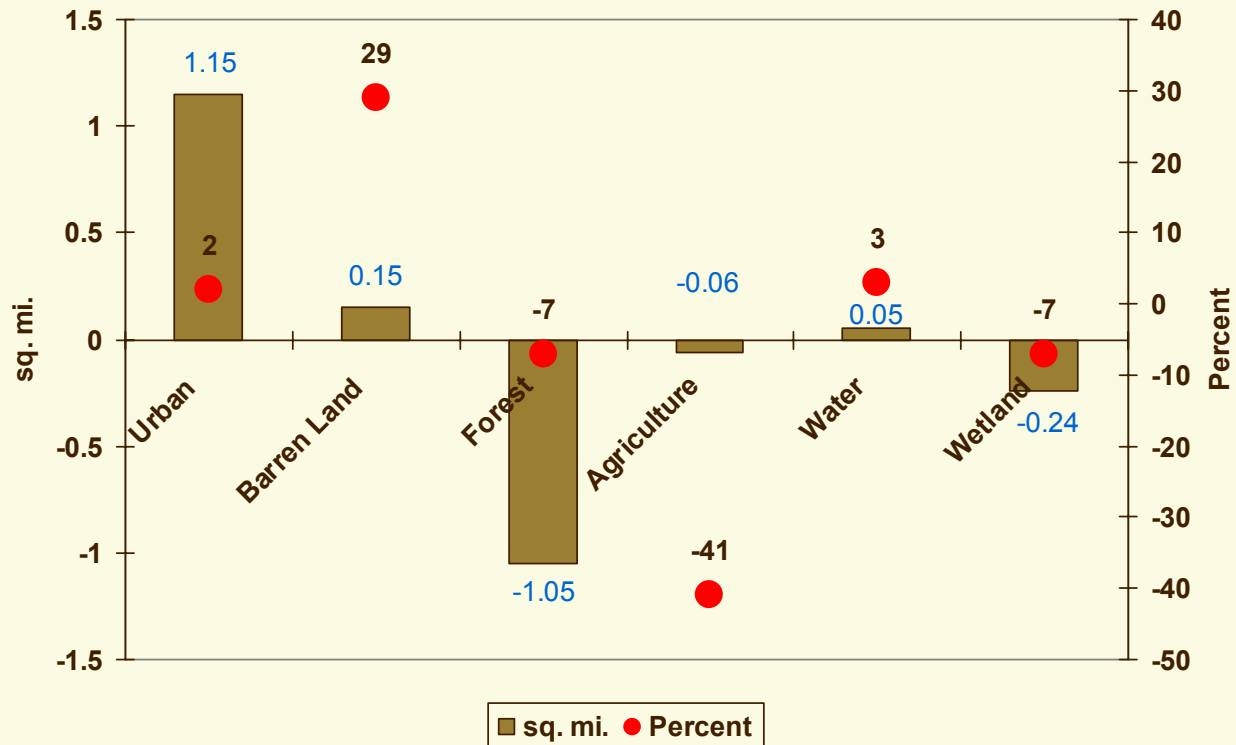
Land Use



 Urban  Agriculture  Wetland  Forest  Water  Barren Land

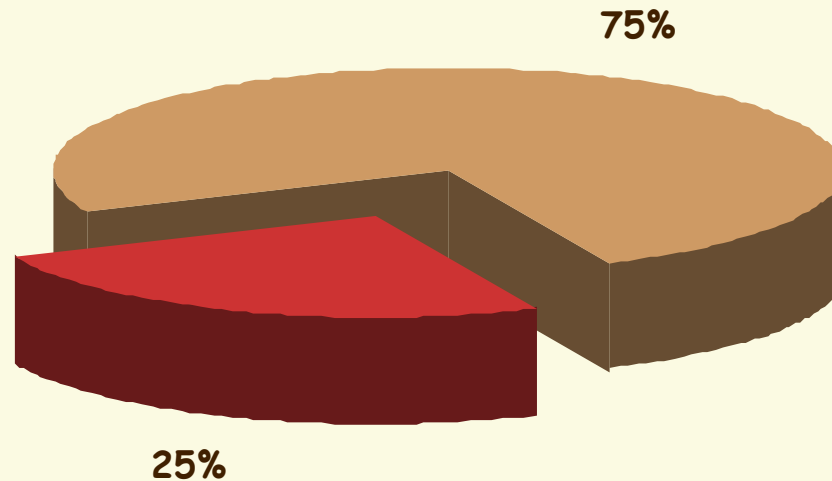
WMA 4 Watershed Characterization

Land Use Changes from 1986 to 1995



WMA 4* Watershed Characterization

Source of Water Diversion in WMA4

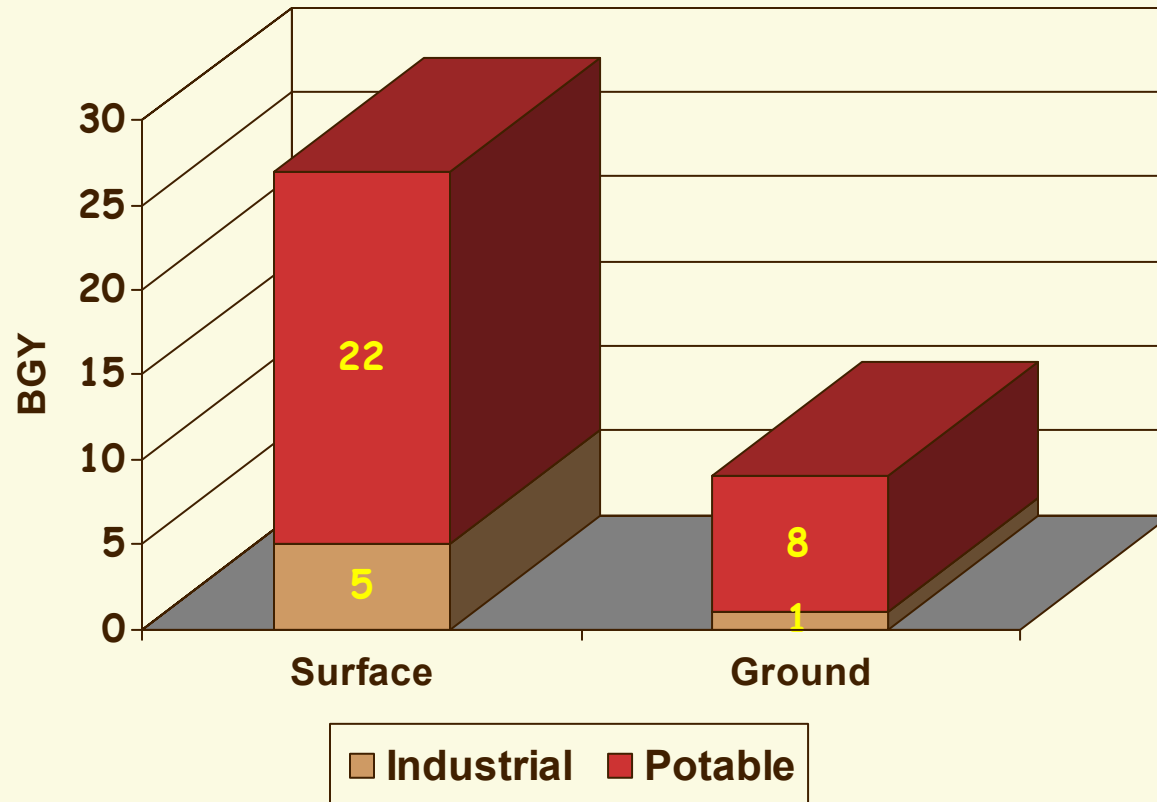


 Surface  Ground

*Whole watershed (Tidal plus non-tidal)

WMA 4* Watershed Characterization

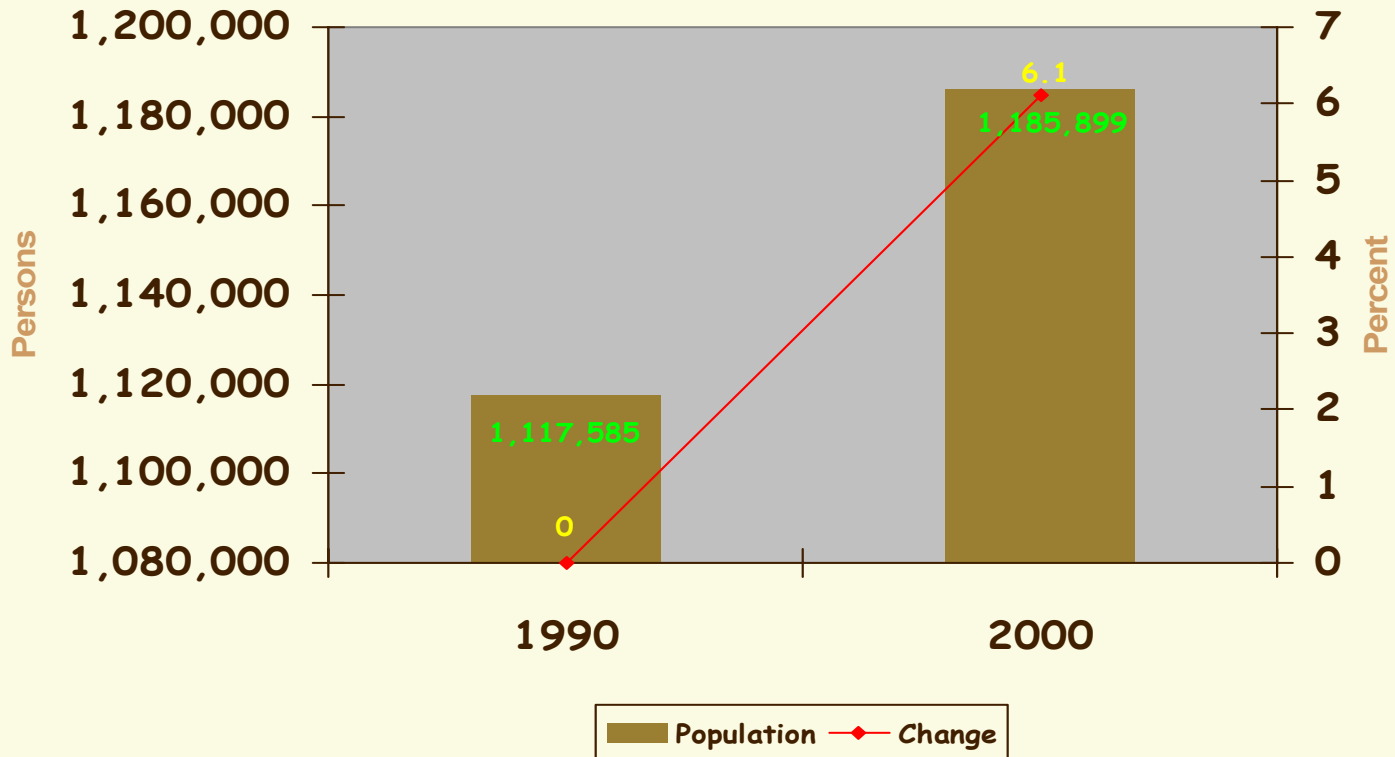
Water Uses and Their Sources



*Whole watershed (Tidal plus non-tidal)

WMA 4* Watershed Characterization

 Population Change in 10 Years



*Whole watershed (Tidal plus non-tidal)

WMA 4 Watershed Characterization

☞ Watershed Stressors:

☞ Non-point sources: Stormwater runoff, golf courses & residential lawn areas

☞ Point sources: There are 3 major domestic permitted wastewater treatment facilities, total discharges 21 MGD: **Wayne Township Mountain View Facility (13.5 MGD), Verona (5 MGD) and Cedar Grove (2.5 MGD).**

WMA 4 Watershed Characterization

Percentage of Total Loading at Dundee Dam (1997-2000)

